



Customer: Extraxit LLC
 Customer Sample ID: RMB SS Lotion (B1)
 Laboratory Number: 20A0377-03



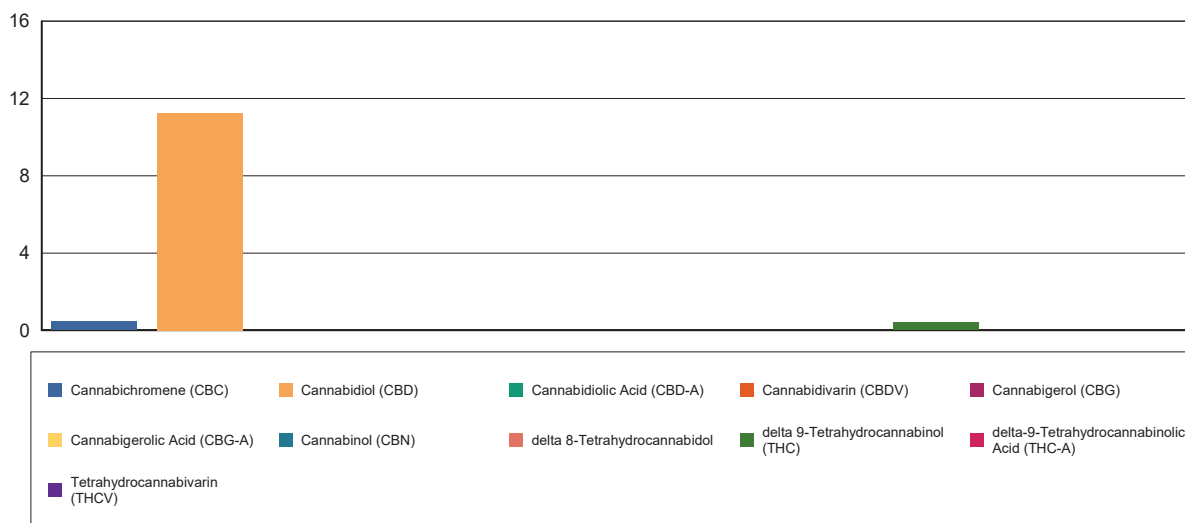
Cannabinoid Profile

Extraction Technician: DF
 Analytical Chemist: CB

Extraction Date(s)	Analysis Date(s)
1/31/2020	1/31/2020

Cannabinoids (HPLC)		Results	
	LOD (mg/g)	%	mg/g
Cannabidiol (CBD)	<0.20	1.12	11.2
Tetrahydrocannabivarin (THCV)	<0.20		
Cannabidiol (CBD)	<0.20		
delta 9-Tetrahydrocannabinol (THC)		0.04	0.391
delta 8-Tetrahydrocannabinol	<0.20		
Cannabichromene (CBC)		0.05	0.454
delta-9-Tetrahydrocannabinolic Acid (THC-A)	<0.20		
Cannabinoids Total		%	mg/g
Max Active THC		0.04	0.39
Max Active CBD		1.12	11.20
T.Active Cannabinoids		1.21	12.10
Total Cannabinoids		1.21	12.10
Ratios			
28.79:1 CBD to THC		0.03:1 THC to CBD	

Cannabinoid (mg/g)



Altitude Consulting, LLC utilizes NIST traceable Reference Standards and Certified Reference Material to calibrate analytical instruments along with proven analytical methods . The methods are applied in the most ethical manner following good laboratory practice guidelines. The results of this report are based solely on the sample submitted and cannot be reproduced.