



Customer: Extraxit LLC
 Customer Sample ID: Subcritical CO2 Galaxy Spent
 Laboratory Number: 19K0086-06



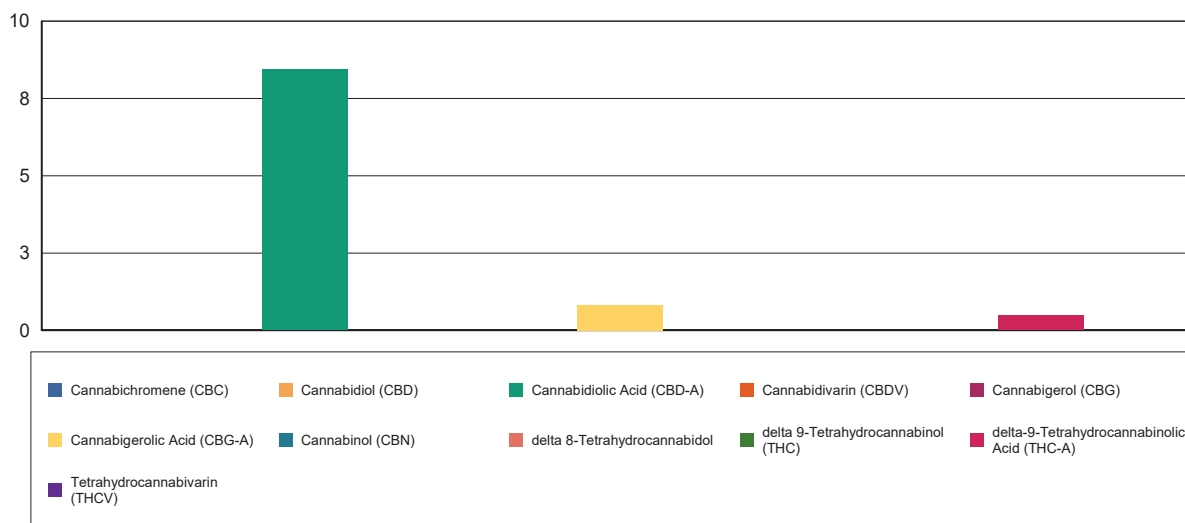
Cannabinoid Profile

Extraction Technician: RH
 Analytical Chemist: CB

Extraction Date(s)	Analysis Date(s)
11/6/2019	11/6/2019

Cannabinoids (HPLC)		Results	
	LOD (mg/g)	%	mg/g
Cannabidivarin (CBDV)	<0.10		
Cannabidiolic Acid (CBD-A)		0.84	8.44
Cannabigerolic Acid (CBG-A)		0.08	0.826
Cannabigerol (CBG)	<0.10		
Cannabidiol (CBD)	<0.10		
Tetrahydrocannabivarin (THCV)	<0.10		
Cannabinol (CBN)	<0.10		
delta 9-Tetrahydrocannabinol (THC)	<0.10		
delta 8-Tetrahydrocannabinol	<0.10		
Cannabichromene (CBC)	<0.10		
delta-9-Tetrahydrocannabinolic Acid (THC-A)		0.05	0.469
Cannabinoids Total		%	mg/g
Max Active THC		0.04	0.41
Max Active CBD		0.74	7.40
T.Active Cannabinoids		0.00	0.00
Total Cannabinoids		0.97	9.74
Ratios			
18.01:1 CBD to THC		0.06:1 THC to CBD	

Cannabinoid (mg/g)



Altitude Consulting, LLC utilizes NIST traceable Reference Standards and Certified Reference Material to calibrate analytical instruments along with proven analytical methods. The methods are applied in the most ethical manner following good laboratory practice guidelines. The results of this report are based solely on the sample submitted and cannot be reproduced.